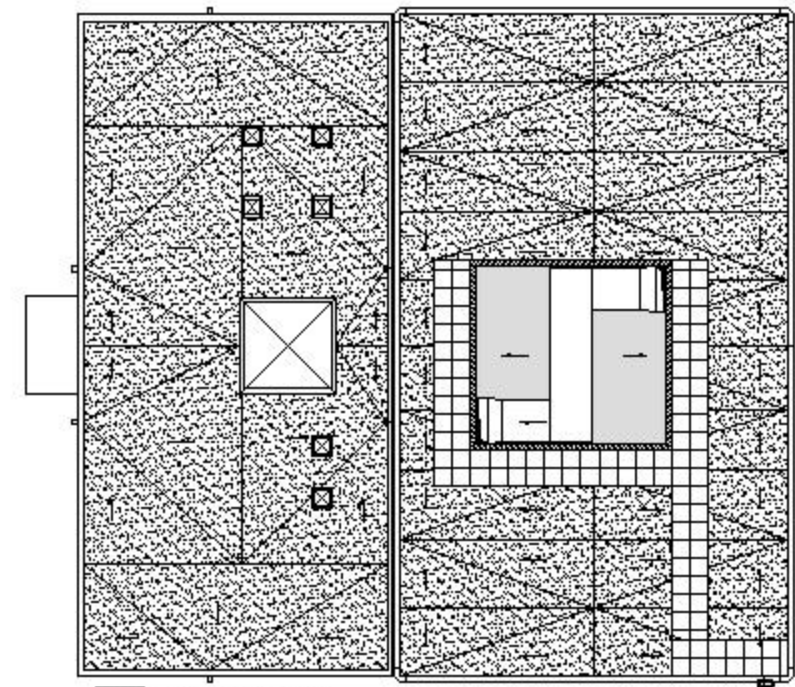
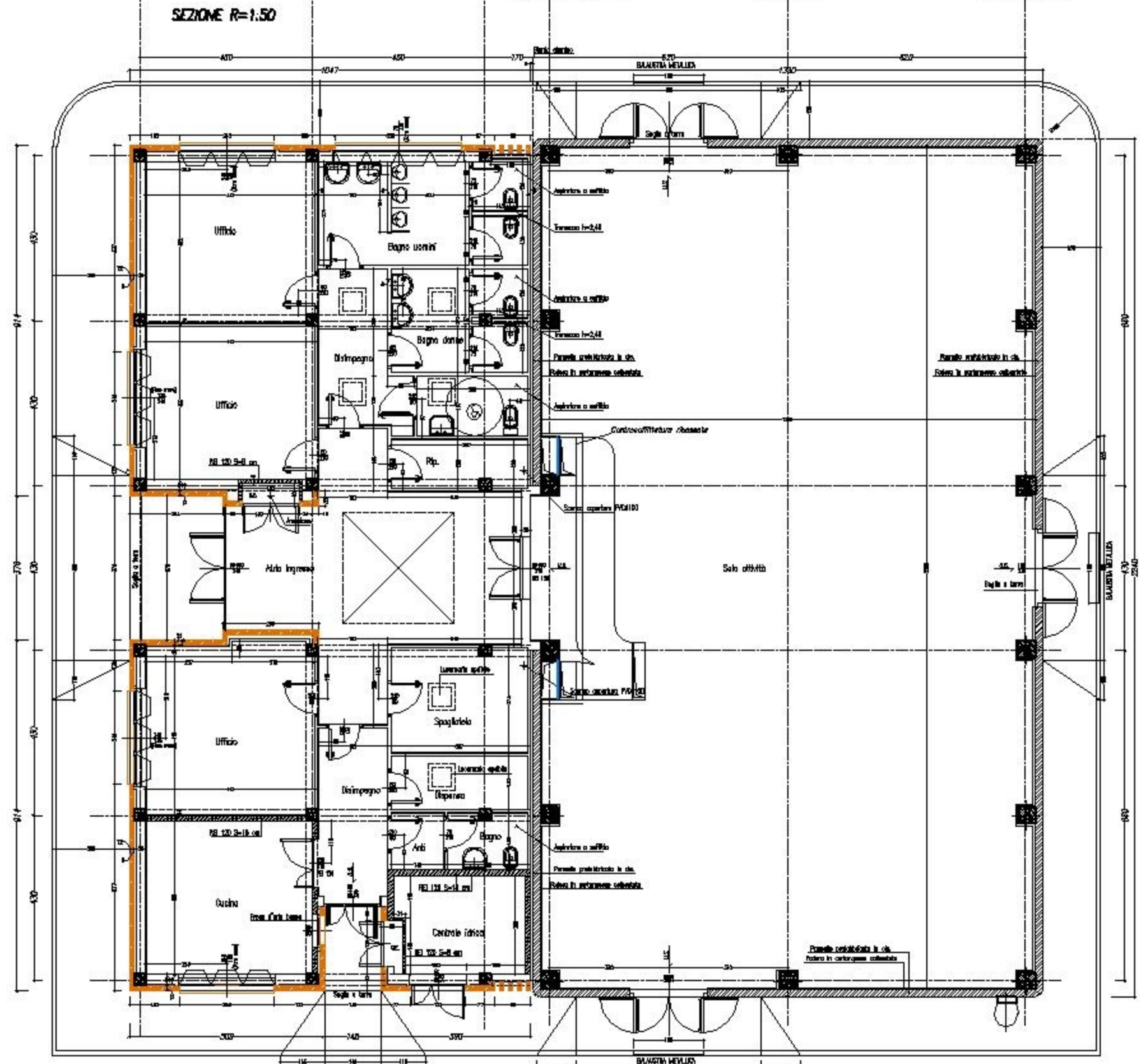
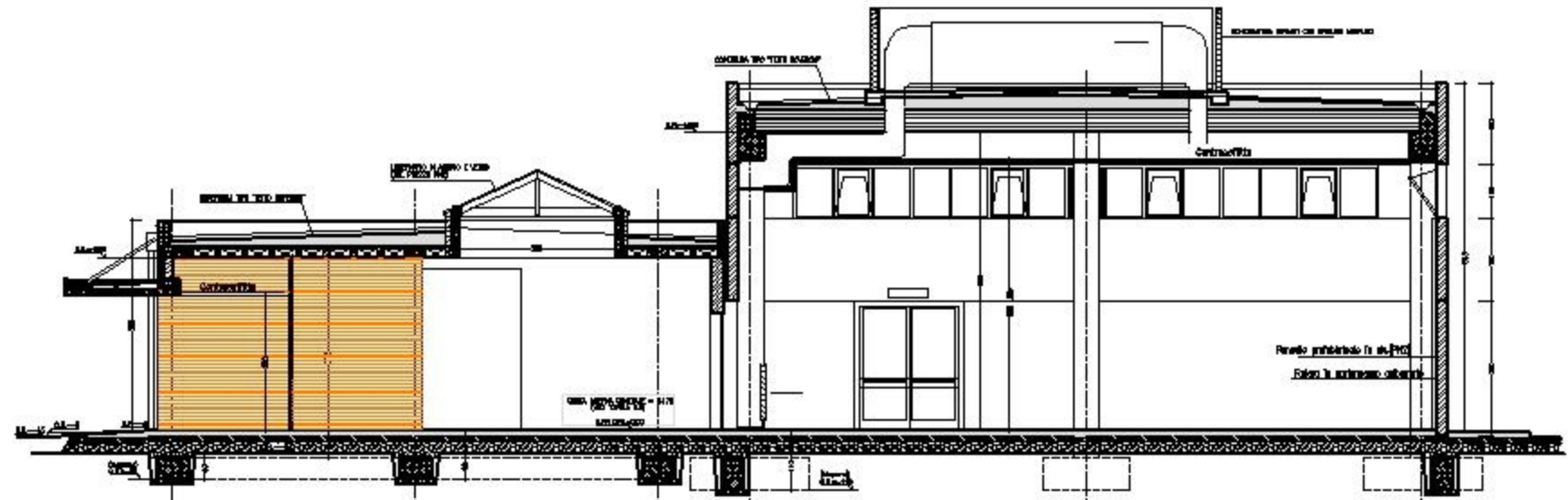
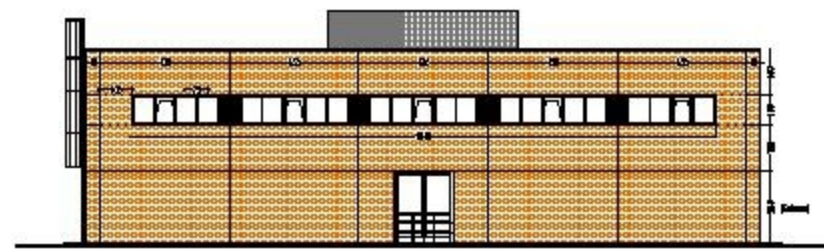


CENTROSERVIZI IN LOCALITA' ALFINA - COMUNE DI CASTEL VISCARDO



- TETTO INCLINATO CON TRAVI IN LEGNO
- TETTO PIANISSIMO CON LASTRE IN C.C.
- QUADRI AEROSATI
- PERGOLATE



Pianta R=1.50